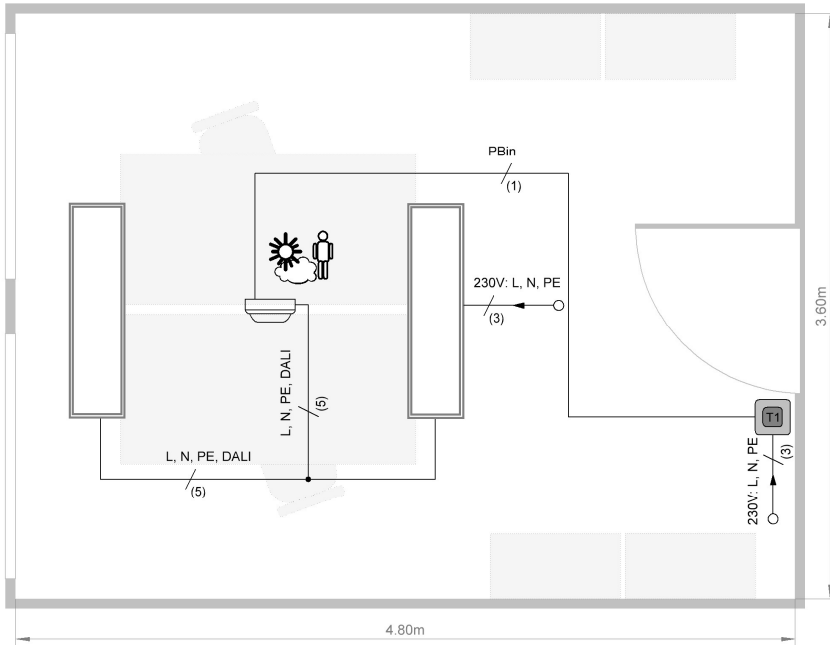


Light control for a 2-person office

Light management system LiveLink Basic with DALI control gear units



- Daylight-dependent control of one luminaire group
- Presence detection
- Push button control ON/OFF/DIM
- Sensor setting at the sensor or via iOS/Android App
- Max. 20 Dali participants

LiveLink Basic



Simple commissioning

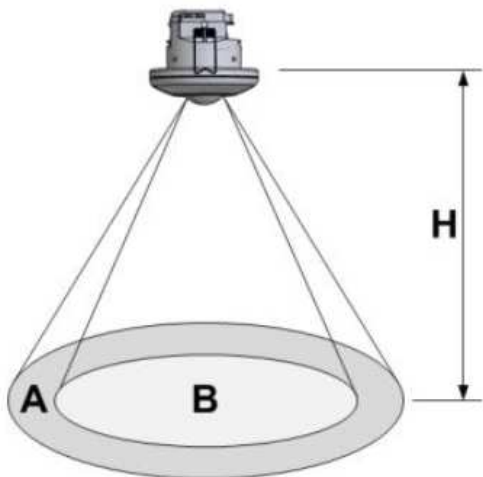
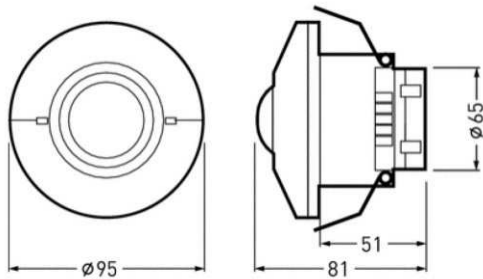
- „Plug and Play“ system – no commissioning necessary
- Preprogrammed and automatic calibration
- Connect and get started
- If required, the sensor can be readjusted or individually adjusted via app



Simple operation

- The lighting can be switched and dimmed by a standard push button
- Operation via bluetooth and app is also possible

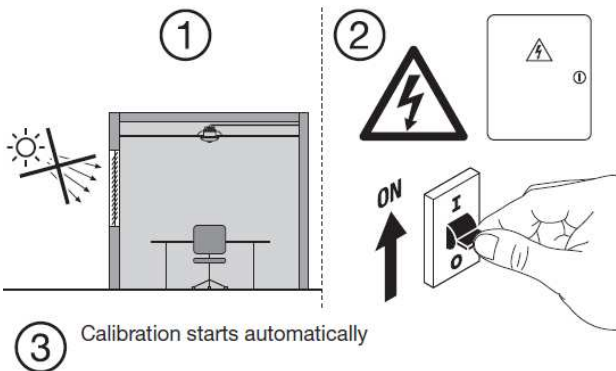
LiveLink Basic Sensor - technical data



TECHNISCHE DATEN

Weight	144g
Input voltage	220-240V AC +/- 10%
Input frequency	50/60Hz
Standby power consumption	< 0,3W – 1,8W
Installation depth	min. 55mm
Hole size	Ø 68mm – 80mm
Ports	Power (N, L) 1x DALI 1x Push button
Sensor function	Light sensor + presence detection
Presence sensor - Detection range	@ H = 2,5m A = 6m B = 5m @ H = 3m A = 7m B = 6m @ H = 4m A = 8m B = 7m @ H = 5m A = 10m B = -
Light sensor sensitivity	20 ... 5000 lx (angle of coverage 2x30°)
DALI participants	max. 20
DALI output current	80 mA
DALI groups	1
Degree of protection	IP20
Protection class	II
Ambient temperature ta	0 °C ... +55 °C
Cable length DALI	max. 300m
Cable length push button	max. 25m
Permissible wire cross-section	NYM / H05VV with 1,5mm ²
Bluetooth Interface	Bluetooth 4.0 LE
Bluetooth signal range	max. 15m
Smartphone	Android 4.x (Samsung Galaxy S4 or higher) iOS 8.4 (iPhone 5s or higher)
TK	10160052
TOC	7219200

LiveLink Basic - 3 commissioning options



1. „Plug and Play“

- NO commissioning
- Start of automatic calibration after power interruption
- Duration of calibration approx. 1 min
- The light control is calibrated to 80% of the max. illuminance
- After that the system is active



2. At the sensor

- Simple adjustment of the settings with the screwdriver
- The sensor can easily be readjusted by rotary potentiometers
 - Switch-off time and test mode of presence detection
 - Setpoint value for constant light control
 - Reset key for factory setting



2. With the App (Individual)

- Full access to all parameters with the LiveLink Basic Install App

LiveLink Basic commissioning & operation



Android 4.x or higher



iOS 8.4 or higher

LiveLink Basic Install

- Access to all control parameters with the LiveLink Basic Install App
- Predefined standard profiles available for all office applications
- Storage of user-defined profiles for quick adaptation of multiple rooms
- Error detection wizard with step-by-step troubleshooting guide
- Password protection for configuration and user app
- Local copy of the configuration on the smartphone
- Easily create and send password lists for entire projects



Android 4.x or higher

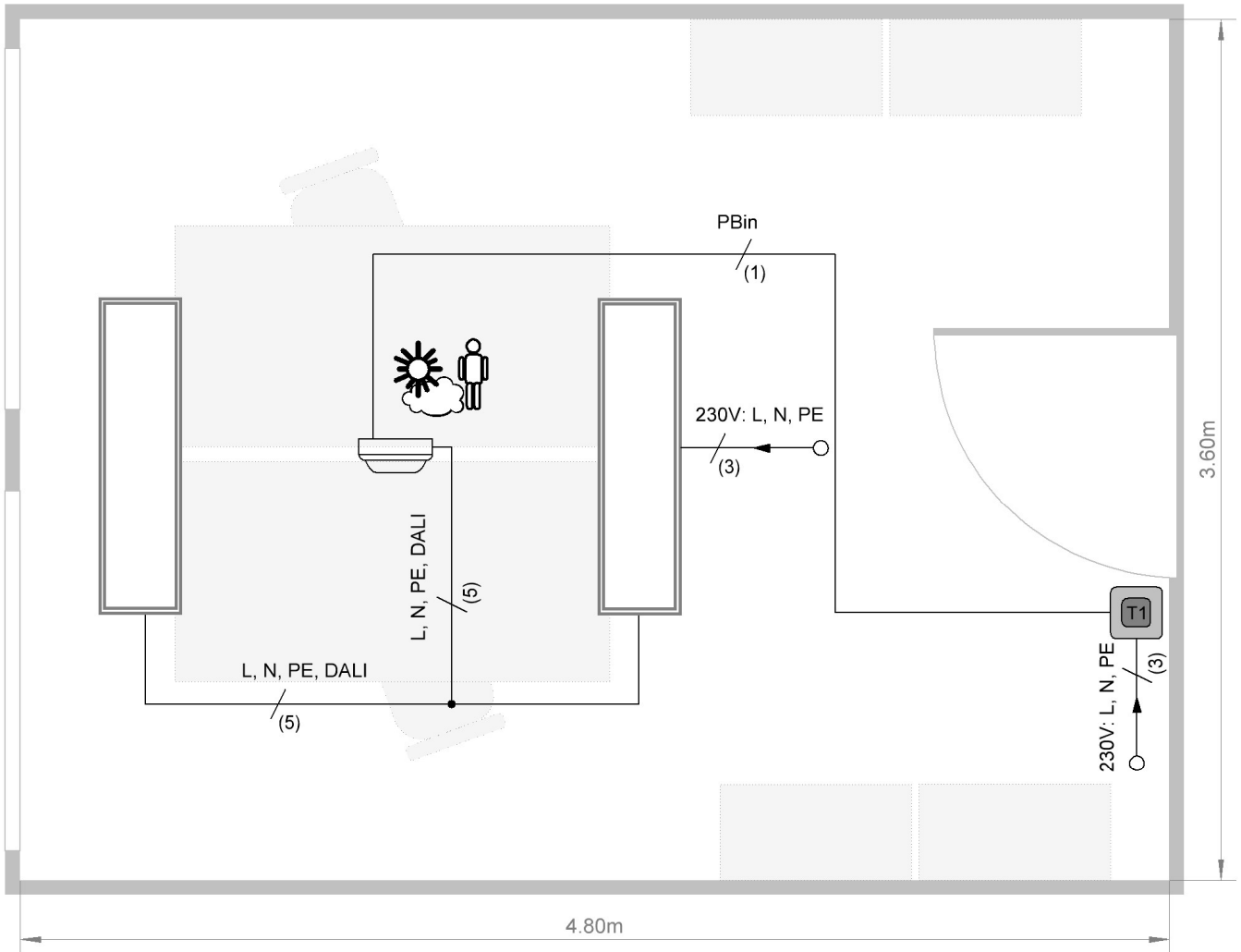


iOS 8.4 or higher

LiveLink Basic Control

- App control of the lighting with the LiveLink Basic Control App
- Manual override of the control possible at any time
- Password protection to restrict access to the lighting system
- Automatic reconnection when opening the app

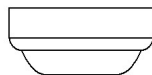
General plan:



Luminaire with Dali control unit



Push Button



LiveLink Basic Sensor



TRIUX
SIMPLIFY YOUR LIGHT.

Wiring plan:

