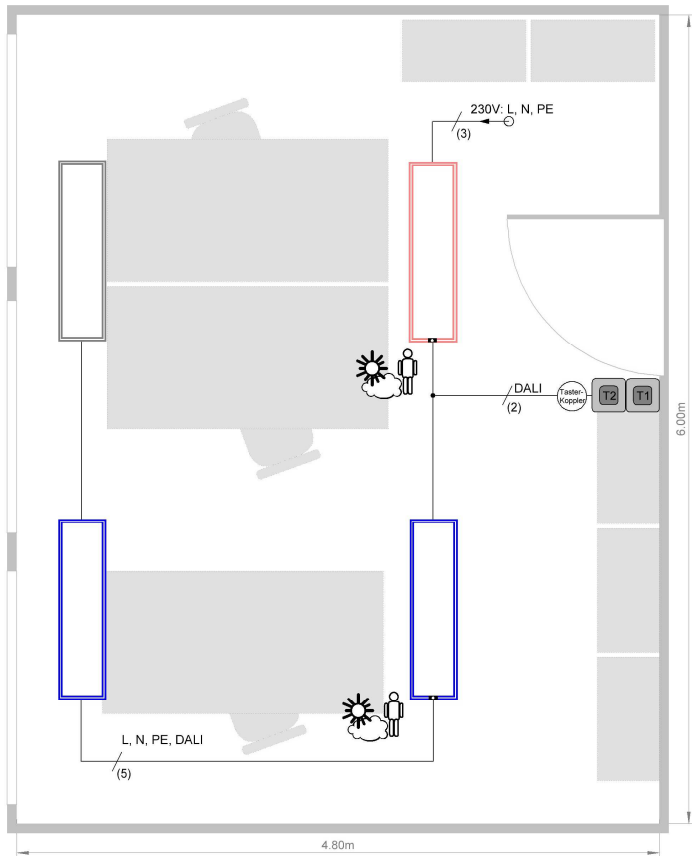


Light control for a 3-person office

Light management system LiveLink with DALI control gear units and luminaire-integrated sensor in Use Case "Large Office".



- Daylight-dependent control of one luminaire group
- Presence detection
- Push button control ON/OFF/DIM
- Addressing of lighting via iOS or Android tablet

Use Case "Large Office"

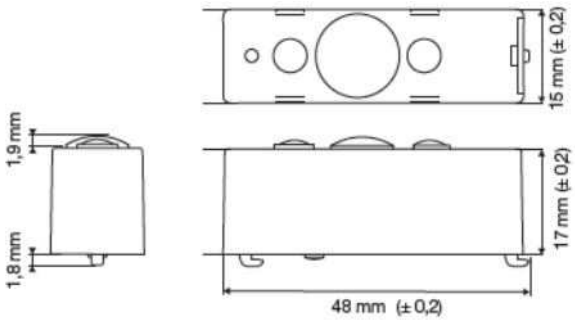
The Use Case "Large Office" features the preset luminaire groups "Work 1", "Work 2", "Work 3", "Work 4" and "Additional". Additionally, there are four sensors in charge of daylight-dependent light control and presence detection. This is carried out separately by group.

General information on Use Cases:

Use Cases should be updated regularly on your tablet in the LiveLink Install App. Use Cases can be updated in the LiveLink Install App in the menu item "Use Case Management".

Preset luminaire groups		Preset scenes	
Luminaire Group	Function	Scene	Function
Work 1-4	<ul style="list-style-type: none"> • Presence detection • Daylight-dependent control 	Automatic	<ul style="list-style-type: none"> • 5 minutes switch-off delay, fully automatic operation • Daylight control active via sensors S1-4, each separately
Additional e. g. for accent lighting	<ul style="list-style-type: none"> • Presence detection 	Service	<ul style="list-style-type: none"> • Constant dimming level for all groups at 100 % • 10 minutes switch-off delay
		Night lighting	<ul style="list-style-type: none"> • Constant dimming level for all groups at 20 % • No automatic switch-off
		Off	<ul style="list-style-type: none"> • All groups off



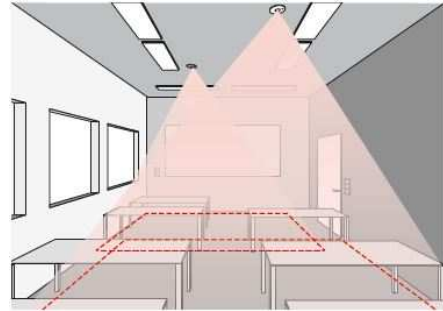
Sensor LD/PD LI	
Technical data	
Characteristics	<ul style="list-style-type: none">• Compact construction for luminaire integration or alternatively ceiling recessing• Available integrated in LiveLink master luminaire on request
Sensor type	<ul style="list-style-type: none">• Passive infrared presence sensor (PIR)• Light sensor
Dimensions	
Place of operation	<ul style="list-style-type: none">• Indoor
Light value setting	<ul style="list-style-type: none">• 20 - 800 lx
Protection rating	<ul style="list-style-type: none">• IP20 (IP54 with AP box)
Safety class	<ul style="list-style-type: none">• II
Temperature range	<ul style="list-style-type: none">• -20°C to +50°C
Number of DALI devices	<ul style="list-style-type: none">• 2
Mounting height (ceiling mounting)	<ul style="list-style-type: none">• 2m – 5m
Detection angle/square	<ul style="list-style-type: none">• max. diameter 7 m



Sensor placement

Detection range

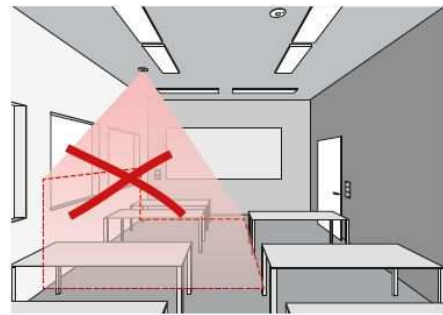
- The sensor's detection range must be considered (see sensor product specification sheet). The sensor should cover working and movement areas in the room, but also – if possible – the entrance, so that the light can be switched on in good time. If the detection range is insufficient, a greater number of sensors must be arranged.
- When using high-frequency or radar sensors, it is important to consider that detection may occur even through thin walls. Furthermore, the narrow detection range (see product specification sheet) must be considered.



Light sensor

For daylight control functions it is important that the light or combined presence and light sensor is placed in a suitable position.

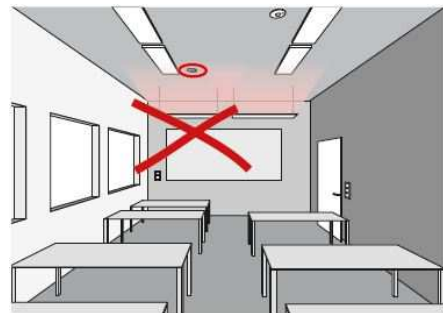
- The light sensor should not be placed too close to window surfaces, but also not too far inside the room.
- The sensor should be placed in a position where it is exposed to average daylight intensity, for example in the middle of the room or close to work stations for which the light control is calibrated.
- The light sensor should be placed above a suitable surface, if possible. Ideally, this surface should also be used as a reference surface for lighting intensity calibration. It should have a medium reflectance value. Well-suited surfaces are desktop surfaces or light grey path surfaces.
- It is important to observe that no objects which might impact sensor functions are placed underneath the sensor, e.g. palettes or taller pieces of furniture.



Sources of interference

Avoid placement near any of the following sources of interference:

- Ventilation systems or sources of heat, e.g. heaters or video projectors
- Sources of light interference, e.g. luminaires with an indirect light component that directly hits the sensor
- Daylight reflection, e.g. from mirrors
- Radio or WLAN emitters at a distance of circa one metre



Further sensor information

For further detailed sensor information and data please refer to the system manual or the sensor specification sheet.

Functional description

Daylight-dependent control

The luminaires are controlled depending on daylight and switched off when daylight is sufficient. When movement is detected and light levels are below the nominal value, lighting is switched back on. The sensor should be installed centrally between the luminaires.

Presence detection

This application example applies to the operating mode AUTOMATIC. In this case, the entire lighting is switched off automatically after a switch-off delay of 5 minutes once a room is left empty. Automatic switch-on is only effected when movement is detected.

App download

The system is set up with the app "LiveLink Install". System requirements are either an iOS or an Android tablet. The apps can be found in the Apple App Store or the Google Play Store.



www.trilux.com/livelink-app



Commissioning

Commissioning LiveLink is done in next to no time – thanks to a simple graphic user interface featuring intuitive and comfortable operation. For this purpose, the control unit sets up its own secure WLAN. From that point on, the user communicates directly with the system through the commissioning app "LiveLink Install" on a tablet.

LiveLink Install guides the user through commissioning step by step. Intelligent control and feedback functions give the installer a maximum of security. When luminaires and sensors are tapped in the app, they flash. Mix-ups are impossible. Configuration is done via drag & drop. All steps are intuitively comprehensible, even for first-time users.

For help during commissioning, we provide you with our LiveLink system manual which is enclosed with every LiveLink system. You can also find the system manual on our homepage www.trilux.com/livelink.

Push button assignment

Push buttons are connected to a light scene or a luminaire group. When a light scene is assigned to a push button, said light scene is later activated at the press of the button. When a luminaire group is assigned to a push button, said luminaire group is later dimmed or switched on at the press of the button (Touch Dim function). One push button can only be occupied by one single light scene. In the Use Case Large Office, the push buttons should be programmed as luminaire group push buttons for the associated work lighting as depicted in the plan.

Luminaire group push button functions (Default scene)

Push button operation	Function	Note
T1		
Short button press	ON/OFF/DIM Work 1	When switching on, room lighting always starts up in the Default scene; with Standard Use Case settings in daylight-dependent standard operation.
Long button press	Dimming, Work 1	Dimming automatically switches over to manual operation and the set artificial light level remains consistent. Presence detection remains active.
T2		
Short button press	ON/OFF/DIM Work 2	When switching on, room lighting always starts up in the Default scene; with Standard Use Case settings in daylight-dependent standard operation.
Long button press	Dimming, Work 2	Dimming automatically switches over to manual operation and the set artificial light level remains consistent. Presence detection remains active.

Push button coupler note:

A maximum of 4 commercially available push buttons with one normally open contact can be connected to each push button coupler. If more than 4 push buttons are required, more push button couplers can be integrated. (1 push button coupler = 1 DALI device)

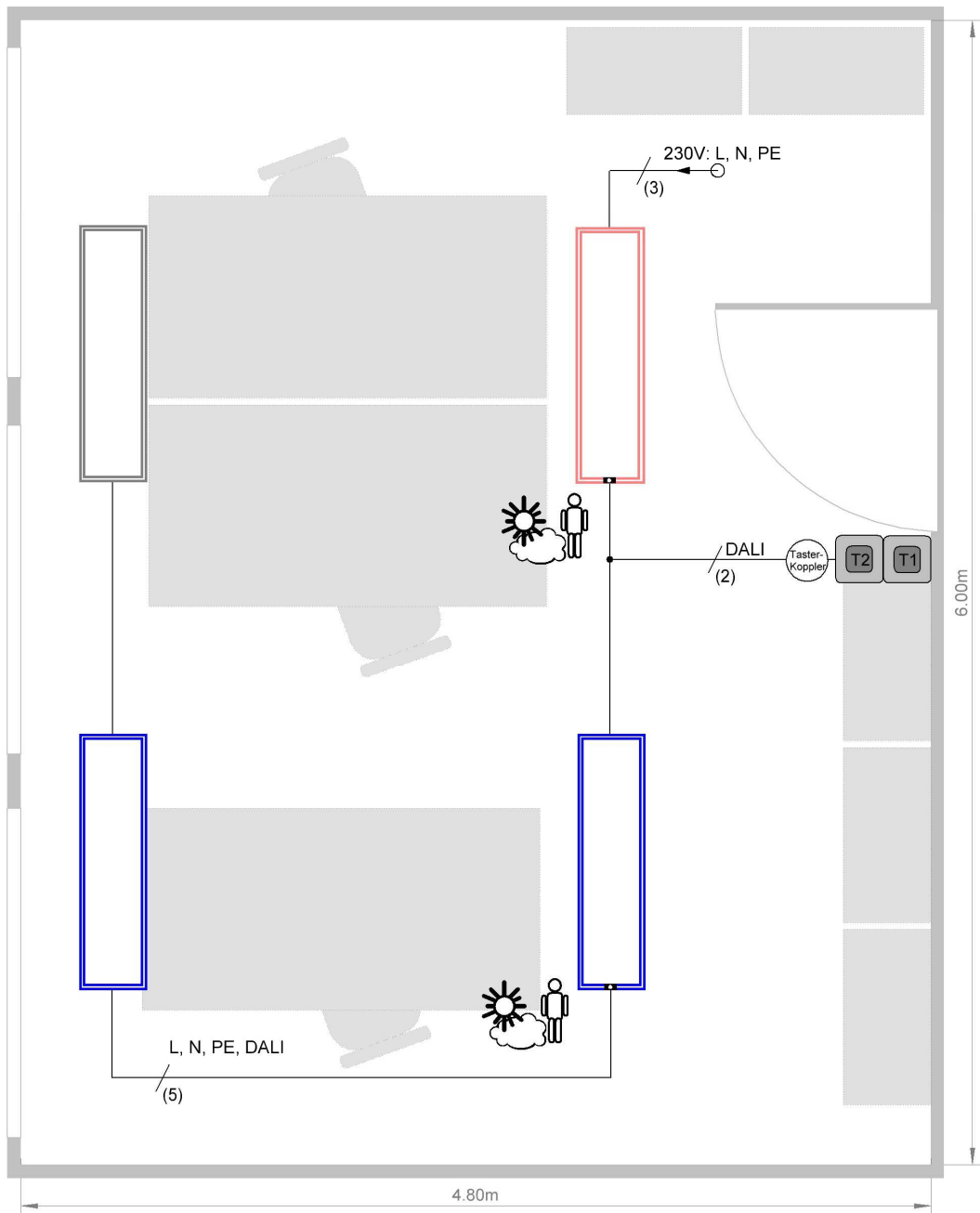
List of components

Pcs.	Reference		Note
1	Luminaire	LATERALOP H1 BLGS 6000-840 ETDD +LLWC 01 (example luminaire)	Master luminaire with DALI control gear unit and LiveLink controller
1	Luminaire	LATERALOP H1 BLGS 6000-840 ETDD +LLWS 01 (example luminaire)	Sensor luminaire with DALI control gear unit
2	Luminaire	LATERALOP H1 BLGS 6000-840 ETDD (example luminaire)	Luminaire with DALI control gear unit
1	Push button coupler	LiveLink DALI PB4	TX DALI push button coupler



TRILUX
SIMPLIFY YOUR LIGHT.

General plan:



- Luminaire with DALI control gear unit LiveLink controller & sensor, group 1
- Luminaire with DALI control gear unit, group 1
- Luminaire with DALI control gear unit and LiveLink sensor, group 2
- Luminaire with DALI control gear unit, group 2



Wall push button

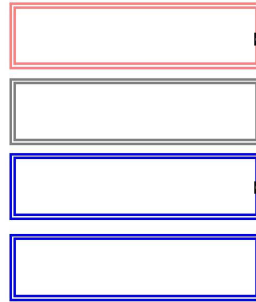
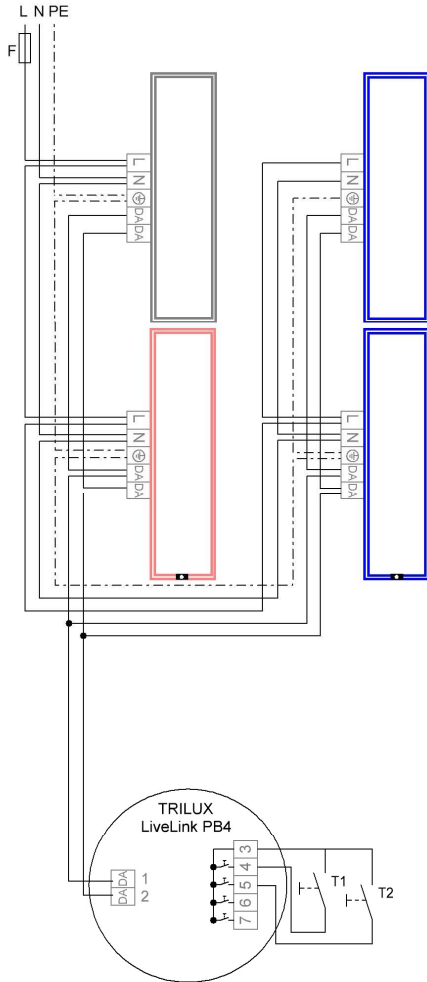


Push button coupler LiveLink DALi PB4



TRILUX
SIMPLIFY YOUR LIGHT.

Wiring plan:

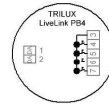


Luminaire with DALI control gear unit
LiveLink controller & sensor, group 1

Luminaire with DALI control gear unit, group 1

Luminaire with DALI control gear unit
and LiveLink sensor, group 2

Luminaire with DALI control gear unit, group 2



Push button coupler
LiveLink DALi PB4



Wall push button